



HALBMOND  
TEPPICHWERKE

Tiles & More

TM4

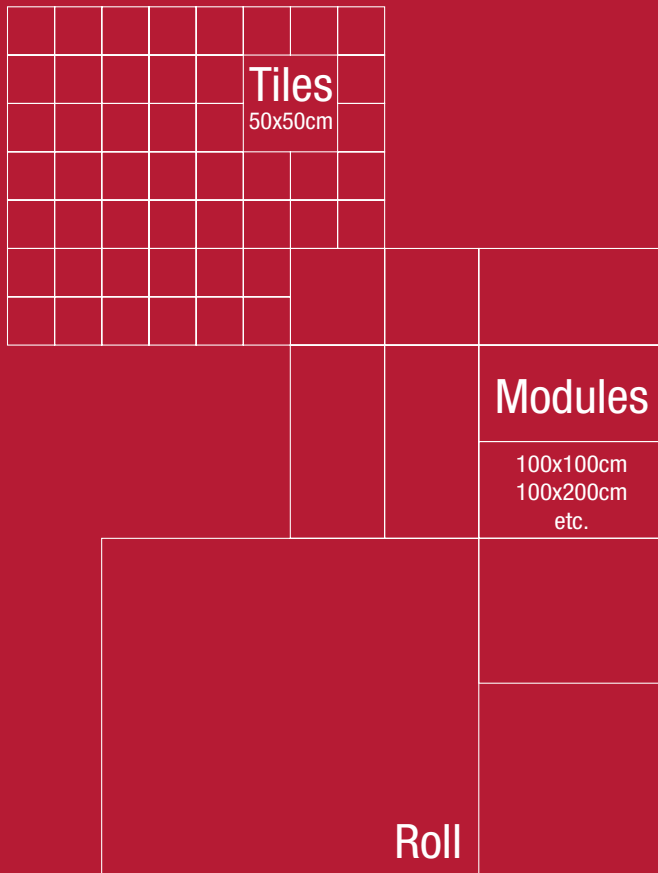


# Tiles & More

*Not just one more tile collection.*

*It's much more than that.*

*It's a proven concept.*



A unique concept for contract flooring solutions

- Developed by Halbmond in 2000. Continuously improved and well proven in contract applications.
- Offering a wide range of products for diversified market applications.
- Choose tiles or broadloom, or use them together for optimized installations. Tiles, modules and broadloom made in one production run. Uniform thickness for all formats
- Offered with three backing options (Easy Lift 2,5, Easy Lift 3,5 and action back up to 4m wide
- Manufactured by Halbmond for a flexible and quick response.
- Minimized waste and long-life performance yield reduced costs.
- Easy to install, easy to remove, and easy to replace.



01 02 03

TM4-040-01



06 07 19

TM4-040-02



10 11 12

TM4-040-03



10 16 17

TM4-040-04



20 21 22

TM4-040-05



02 03 04 20

TM4-041-01



06 07 08 19

TM4-041-02



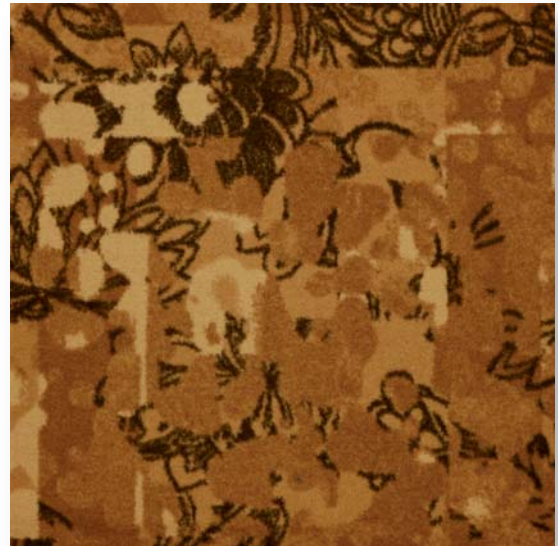
10 11 12 13

TM4-041-03



10 15 17 18

TM4-041-04



07 20 21 22

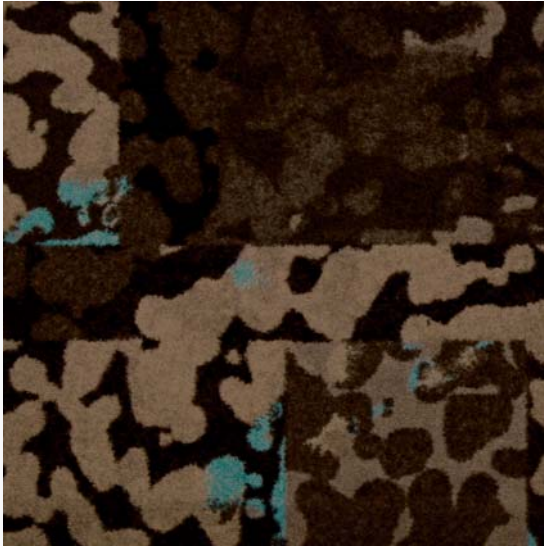
TM4-041-05



02 03 04 05 20 21

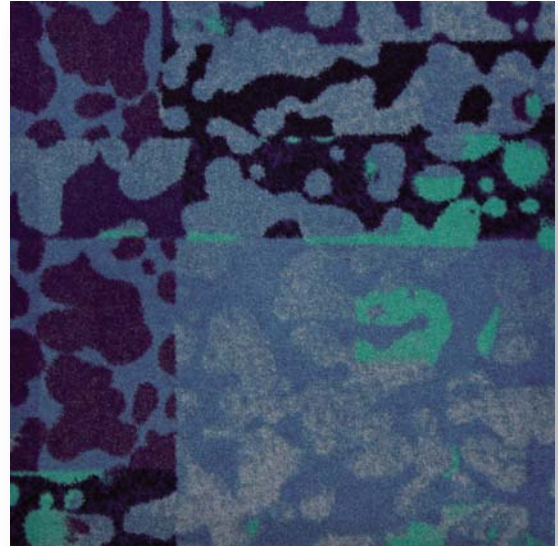
TM4-042-01





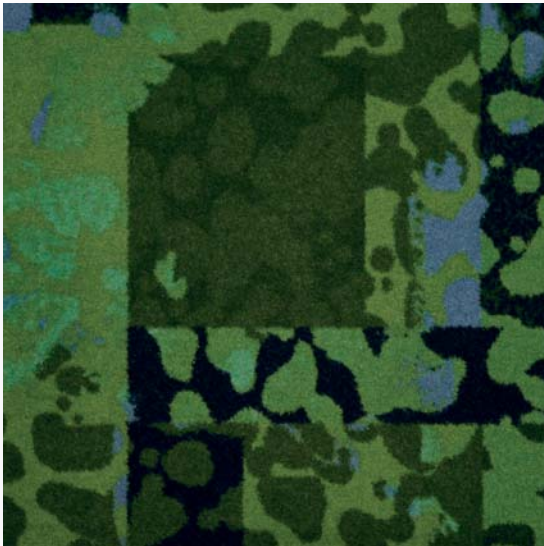
01 06 07 08 18 19

TM4-042-02



10 11 12 13 18 24

TM4-042-03



10 12 15 16 17 18

TM4-042-04



08 19 20 21 22

TM4-042-05



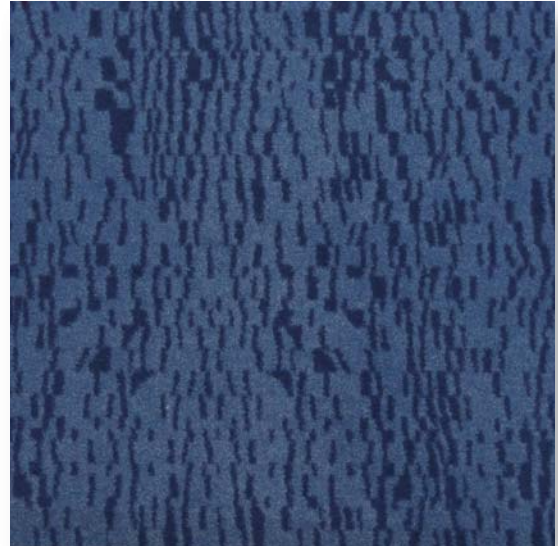
02 03

TM4-043-01



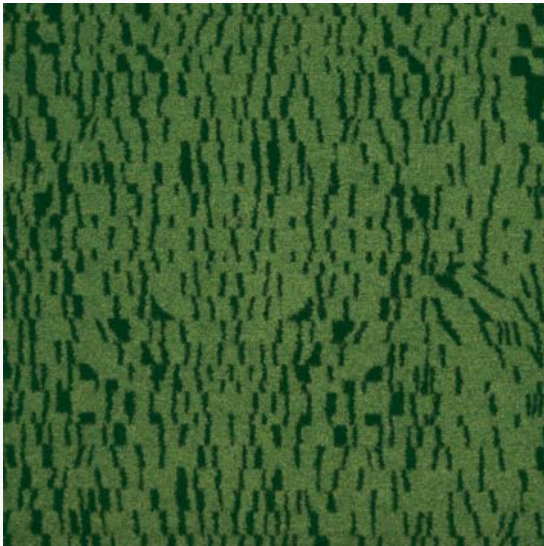
06 07

TM4-043-02



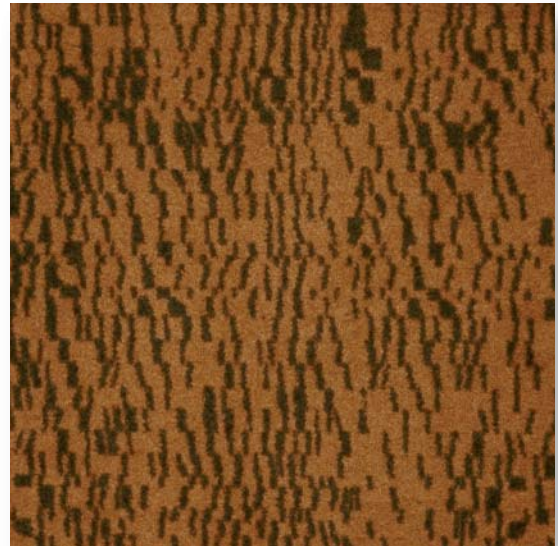
11 12

TM4-043-03



15 17

TM4-043-04



07 20

TM4-043-05



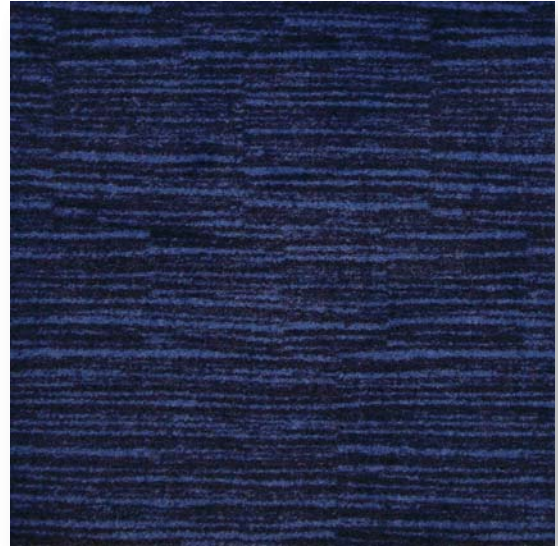
01 02

TM4-044-01



06 07

TM4-044-02



10 11

TM4-044-03



15 16

TM4-044-04



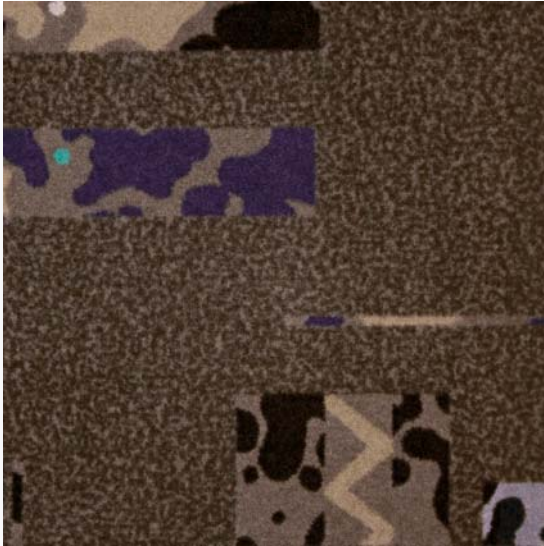
20 21

TM4-044-05

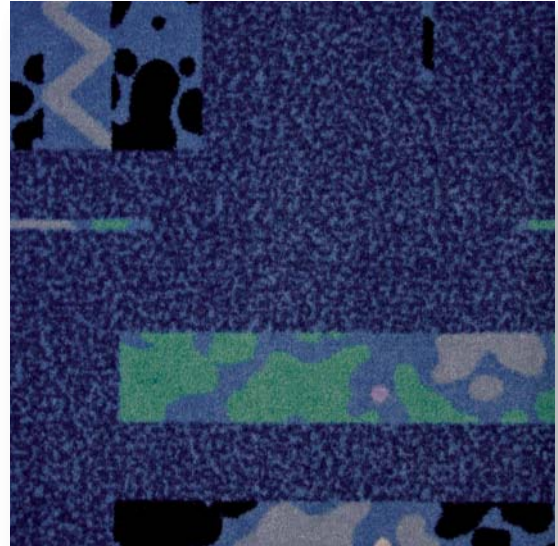


02 03 04 05 14 19 20 21

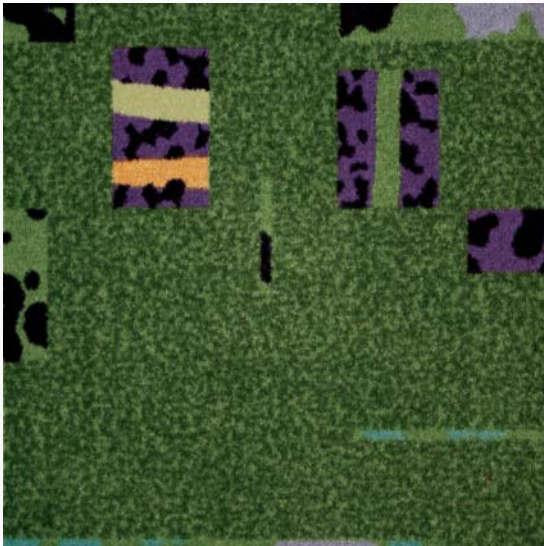
TM4-045-01



06 07 08 09 14 18 19 24 TM4-045-02



09 10 11 12 13 14 18 24 TM4-045-03



10 13 16 17 18 21 23 24 TM4-045-04



04 07 09 19 20 21 22 23 TM4-045-05



03 04

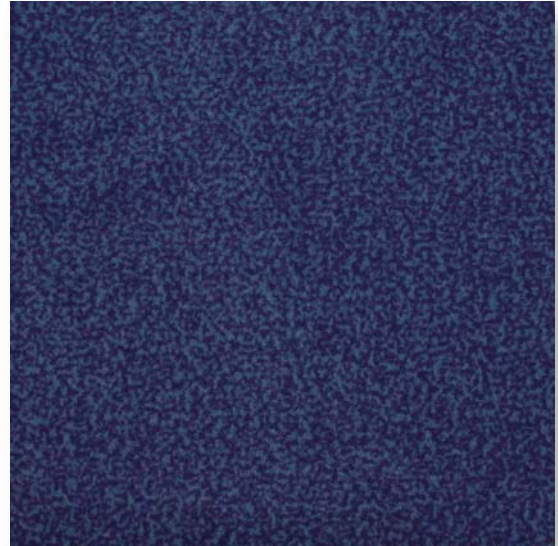
TM4-046-01





07 08

TM4-046-02



11 12

TM4-046-03



16 17

TM4-046-04



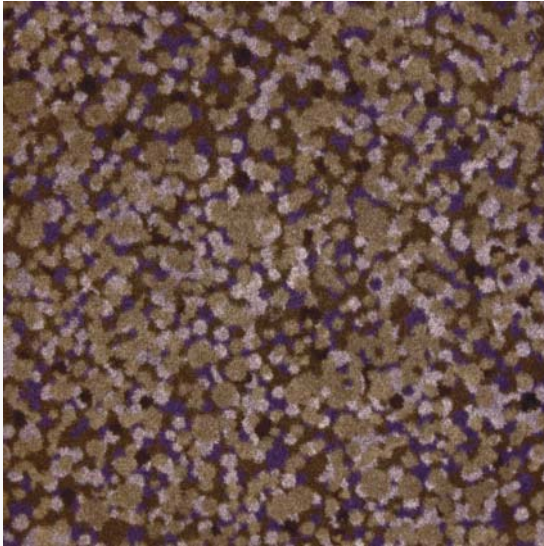
20 21

TM4-046-05

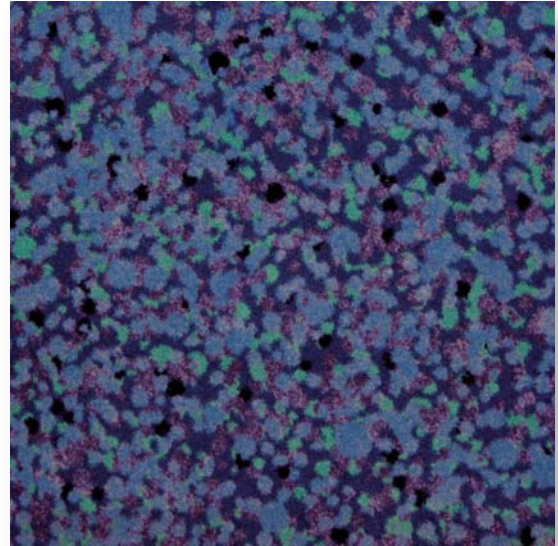


01 02 03 04 05 20 21

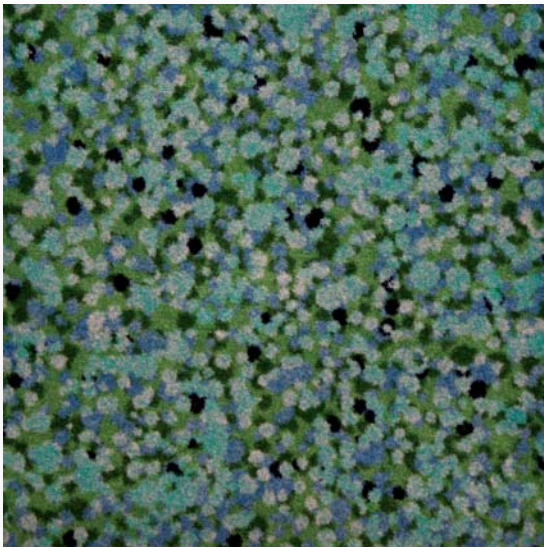
TM4-047-01



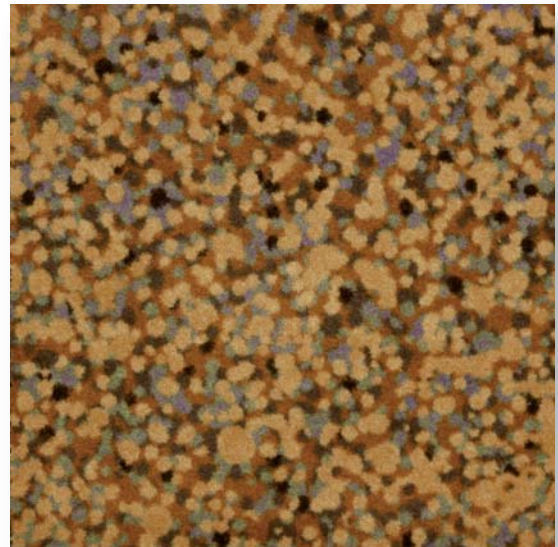
06 07 08 09 14 19 24 TM4-047-02



10 11 12 13 14 18 24 TM4-047-03



09 10 12 13 16 17 18 TM4-047-04



07 08 14 20 21 22 23 TM4-047-05



02 03 04

TM4-048-01



06 08 24

TM4-048-02



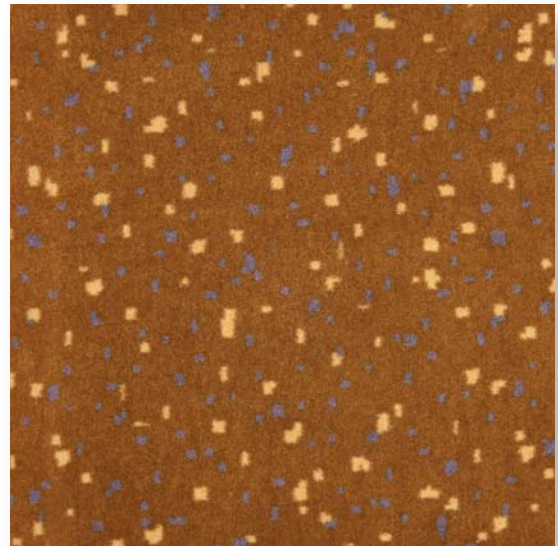
11 19 24

TM4-048-03



16 18 23

TM4-048-04



14 20 22

TM4-048-05



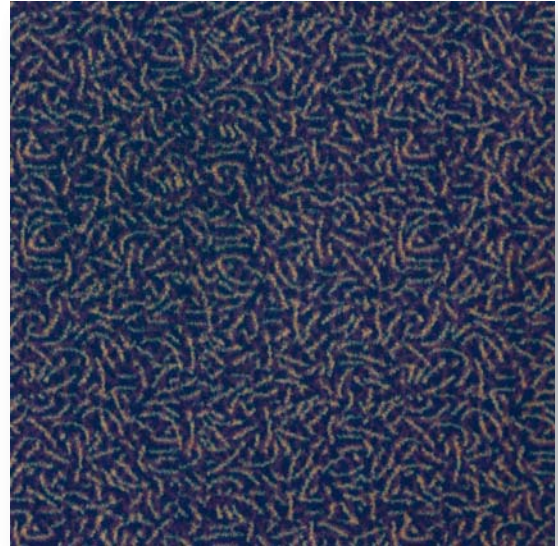
03 04 05

TM4-049-01



06 07 19

TM4-049-02



11 19 24

TM4-049-03



13 16 17

TM4-049-04



08 20 21

TM4-049-05



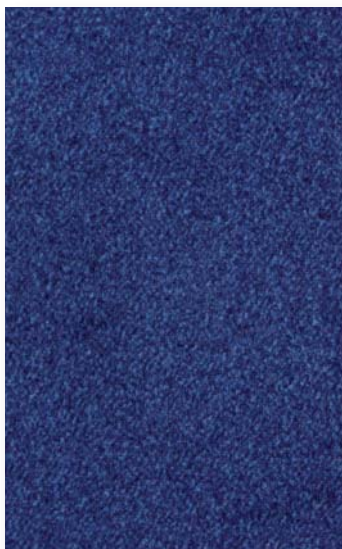
03 04

TM4-444-10



01 02

TM4-444-11



11 12

TM4-444-15



10 16

TM4-444-16





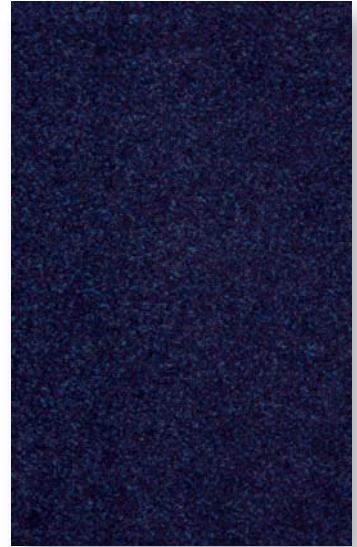
06 07

TM4-444-12



08 09

TM4-444-13



10 11

TM4-444-14



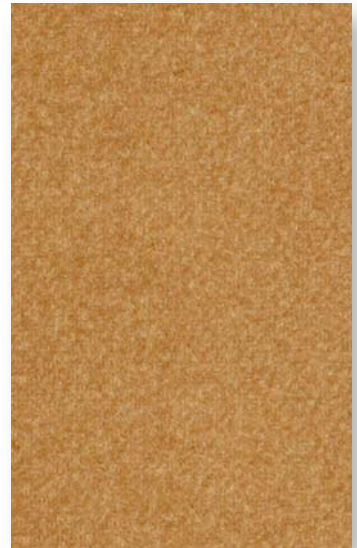
15 16

TM4-444-17



20 21

TM4-444-18



21 22

TM4-444-19

# Tiles & More

*sustainable and environmentally friendly*



meets the special environmental requirements of GUT e.V.

ED59EBC8  
47DDD79B  
BA9BB6F9

meets the characteristics assured by the symbols in accordance with the appropriate EU standards



an environmental product declaration validated by Institut Bauen und Umwelt e.V. is available

EPD-GUT-2009211

is registered in the European product information system PRODIS

## **Certified by GUT**

GUT is one of the strictest labels for floor coverings in the world. GUT considers all possible VOC chemicals, and unlike other certifications, Benzene (carcinogenic substance) is strictly regulated by GUT. The Certification is controlled by GUT/PRODIS Label, a permanent environmental Product Information System for textile floor coverings that is open to the public through the internet.

## **Environmental Product Declaration**

EPD by the IBU-Institute Construction and Environment e.V., is based on ISO 14025, for international certification of "Green Building Systems".

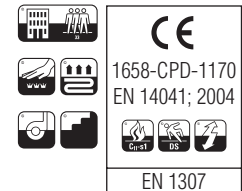
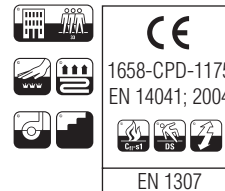
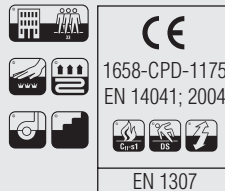
*easy and smart,*

*Tiles and More*

# TECHNICAL DATA

Quality		TM4 Easy Lift 3,5	TM4 Easy Lift 2,5	TM4 TB
Construction		Tufted cut pile Saxony 1/10"	Tufted cut pile Saxony 1/10"	Tufted cut pile Saxony 1/10"
Patterndesign		Jet Print / Chromojet	Jet Print / Chromojet	Jet Print / Chromojet
Primary backing		Polyester non woven	Polyester non woven	Polyester non woven
Secondary backing		heavy backing	heavy backing	textile backing
Pile layer		100% Polyamide 6.6 Antron	100% Polyamide 6.6 Antron	100% Polyamide 6.6 Antron
Wear Rating	EN 1307 old	extrem (4)	extrem (4)	extrem (4)
	EN 1307 new	Commercial Heavy (33)	Commercial Heavy (33)	Commercial Heavy (33)
Comfort Rating		LC 3	LC 3	LC 3
Total weight	ISO 8543	ca. *3790 g/m <sup>2</sup>	ca. *3350 g/m <sup>2</sup>	ca. *2130 g/m <sup>2</sup>
Overall thickness	ISO 1765	ca. **7,8 mm	ca. **7,8 mm	ca. **7,8 mm
Pile total yarn weight		ca. 1050 g/m <sup>2</sup>	ca. 1050 g/m <sup>2</sup>	ca. 1050 g/m <sup>2</sup>
Pile height above primary backing	ISO 8543	ca. 5,0 mm	ca. 5,0 mm	ca. 5,0 mm
Pile density	ISO 8543	ca. *0,15 g/cm <sup>3</sup>	ca. *0,15 g/cm <sup>3</sup>	ca. *0,15 g/cm <sup>3</sup>
Number of tufts per sqm	ISO 1763	ca. *185650/qm	ca. *185650/qm	ca. *185650/qm
Vertical resistance	EN 1815	<2,0KV	<2,0KV	<2,0KV
Impact sound reduction	ISO 140-8	ca. 26 dB	ca. 26 dB	ca. 26 dB
Thermal resistance	ISO 6356	ca. 0,15 qmK/W	ca. 0,15 qmK/W	ca. 0,15 qmK/W
Construction Certification (Germany)	DIN 14041	Z-156.601-691	Z-156.601-691	Z-156.601-618
Reaction to fire	EN 13501	C(fl)-s1	C(fl)-s1	C(fl)-s1

additional suitability



\* tolerances according DIN EN 1307

\*\* +/- 10%

version 25.01.2010, current version on demand

## Colour Bank

<b>01</b> 3068	<b>02</b> 3063	<b>03</b> 3072	<b>04</b> 3053	<b>05</b> 4077	<b>06</b> 8069	<b>07</b> 8068	<b>08</b> 8066	<b>09</b> 4059	<b>10</b> 5067	<b>11</b> 5064	<b>12</b> 5072
<b>13</b> 5054	<b>14</b> 4061	<b>15</b> 6072	<b>16</b> 6067	<b>17</b> 6064	<b>18</b> 6054	<b>19</b> 8057	<b>20</b> 2064	<b>21</b> 2053	<b>22</b> 2051	<b>23</b> 6094	<b>24</b> 4064









  
**HALBMOND**  
T E P P I C H W E R K E

## **Halbmond Teppichwerke GmbH**

Carl-Wilhelm-Koch-Str. 6  
D-08606 Oelsnitz/Vogtland

Telephone: +49 (0) 3 74 21 - 42-0  
Fax: +49 (0) 3 74 21 - 42-571

[info@halbmond.de](mailto:info@halbmond.de)  
[www.halbmond.de](http://www.halbmond.de)