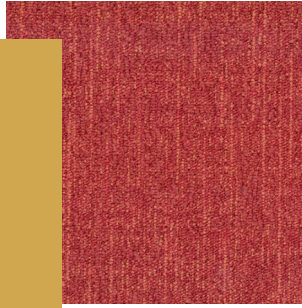


# BLOQ

creative  
carpet tiles



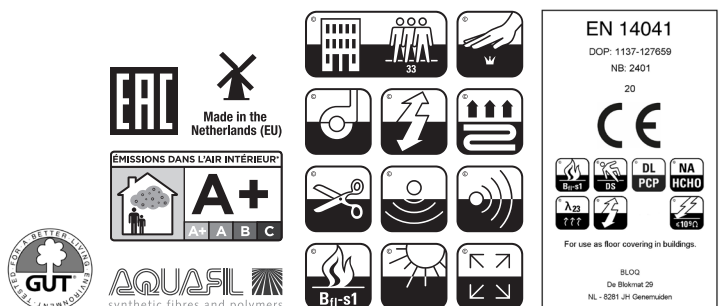
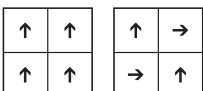
## THE BINARY BALANCE

### SPECIFICATIONS

<b>TYPE OF MANUFACTURE</b>	Tufted Patterned Loop Pile 1/10"
	ISO 2424
<b>PILE FIBER COMPOSITION</b>	100% Polyamide 6
	ISO 2424 Solution Dyed Nylon made by Aquafil
<b>SECONDARY BACKING</b>	Bitback, Modified Bitumen
	ISO 2424 70% Recycled Content
<b>DIMENSION</b>	50 x 50 cm
	EN ISO 24342
<b>PILE WEIGHT</b>	650 g/m <sup>2</sup>
	ISO 8543
<b>SURFACE PILE WEIGHT</b>	380 g/m <sup>2</sup>
	ISO 8543
<b>TOTAL WEIGHT</b>	4 400 g/m <sup>2</sup>
	ISO 8543
<b>TOTAL THICKNESS</b>	6.9 mm
	ISO 1765
<b>PILE HEIGHT</b>	3.8 mm
	ISO 1766
<b>PILE DENSITY</b>	0.100 g/m <sup>3</sup>
	ISO 8543
<b>NUMBER OF TUFTS</b>	152 000 /m <sup>2</sup>
	ISO 1763
<b>DIMENSIONAL STABILITY</b>	≤ 0.2%
	ISO 2551
<b>NUMBER OF COLOURS</b>	18
<b>PACKAGING</b>	Box: 20 tiles / 5 m <sup>2</sup> Pallet: 200 m <sup>2</sup>

### PERFORMANCE

<b>CLASSIFICATION</b>	33
	EN 1307
<b>LUXURY RATING</b>	LC1
	EN 1307
<b>CASTOR CHAIR RATING</b>	A: Intensive use
	EN 985
<b>FIRE CLASSIFICATION</b>	B <sub>fl</sub> -s1
	EN 13501-1
<b>IMPACT SOUND INSULATION</b>	ΔL <sub>w</sub> : 26 dB
	EN ISO 10140-3
<b>SOUND ABSORPTION</b>	Frequency Hz 125 250 500 1000 2000 4000
	EN ISO 354 α <sub>s</sub> 0.00 0.03 0.08 0.19 0.34 0.38
<b>NOISE REDUCTION</b>	α <sub>w</sub> : 0.20
	EN ISO 354
<b>PERMANENT ANTISTATIC</b>	≤ 2 kV
	ISO 6356
<b>TRANSVERSAL RESISTANCE</b>	≤ 1 X 10 <sup>9</sup> Ohm
	ISO 10965
<b>THERMAL RESISTANCE</b>	0.079 m <sup>2</sup> K/W
	ISO 8302
<b>COLOUR FASTNESS TO LIGHT</b>	≥ 7
	EN ISO 105-B02
<b>COLOUR FASTNESS TO WATER</b>	≥ 4
	EN ISO 105-E01
<b>RUBBING FASTNESS</b>	≥ 4
	EN ISO 105-X12
<b>GUT N° PRODIS</b>	F42D2D9F



All rights reserved to alter technical specifications.