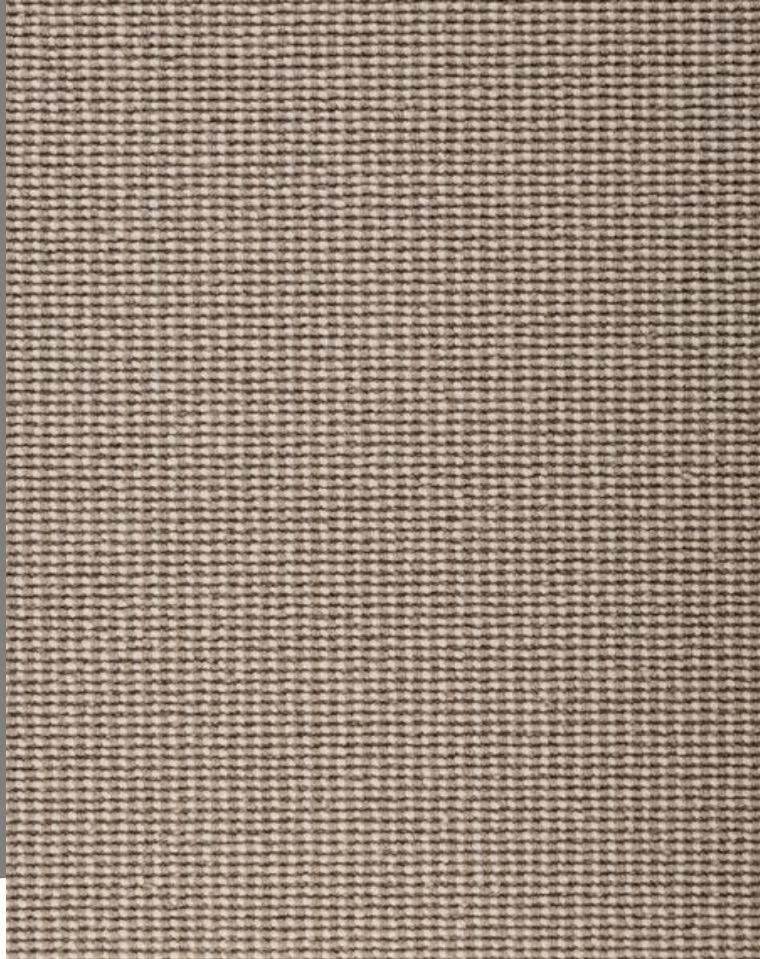


# SAVANNAH

129



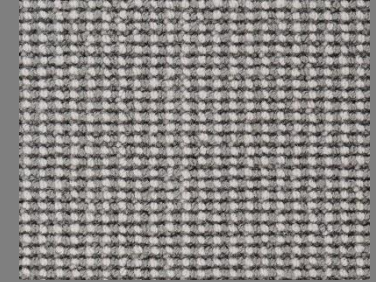
119



181



138



109



182



130



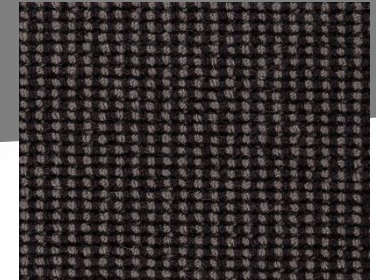
169



136



137



# SAVANNAH



WIDTH 500  
BREITE  
LARGEUR

THERMAL CONDUCTIVITY  $m^2 / K/W$  0.16  
WÄRMEDURCHLASSWIDERSTAND  $m^2 / K/W$   
RESISTANCE THERMIQUE  $m^2 / K/W$

PILE FIBRE COMPOSITION 100% Pure New Zealand Wool  
MATERIAL DER NUTZSCHICHT 100% reine Neuseeland Schurwolle  
COMPOSITION DU VELOURS 100% Pure laine vierge de Nouvelle Zélande

LUXURY CLASS LC 4  
LUXUSKLASSE  
CLASSE DE LUX

YARN SPECIFICATION 3-ply yarn, hank dyed  
GARNE-SPEZIFIKATION 3-fach Garn, stranggefärbt  
SPÉCIFICATIONS DU FIL Fil 3 bouts, teint sur écheveaux

FLOORSYMBOLS  
TEPPICHBODENSYMBOLEN  
SYMBOLES DE SOL

MASS OF PILE  $g/m^2$  1.400  
POLEINSATZGEWICHT  $g/m^2$   
MASSE TOTALE  $g/m^2$



TOTAL MASS  $g/m^2$  2499  
GESAMTGEWICHT  $g/m^2$   
MASSE TOTALE  $g/m^2$



NUMBER OF TUFTS /  $m^2$  89.950  
NOPPENZAHL /  $m^2$   
NOMBRE DE TOUFFES /  $m^2$



TOTAL THICKNESS in mm 9.4  
GESAMTDICKE in mm  
ÉPAISSEUR TOTALE in mm

