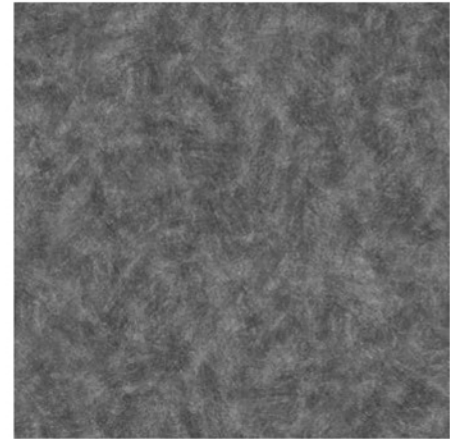
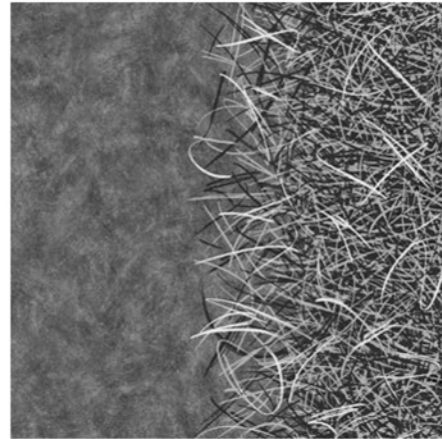


THE 3 SYSTEMS

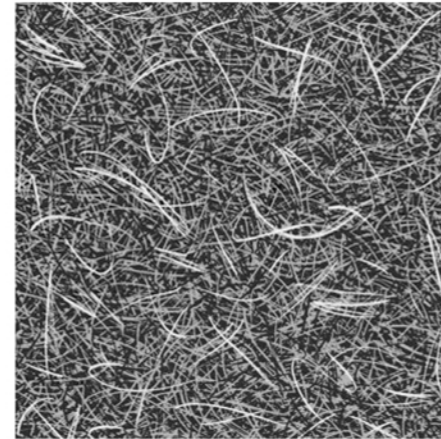
Philippe Starck created a collection of 3 systems, named vortex, artist, twilight. Each of them comes in four separate parts that can be freely arranged to create patterns for your project that adapts to your needs and preferences.



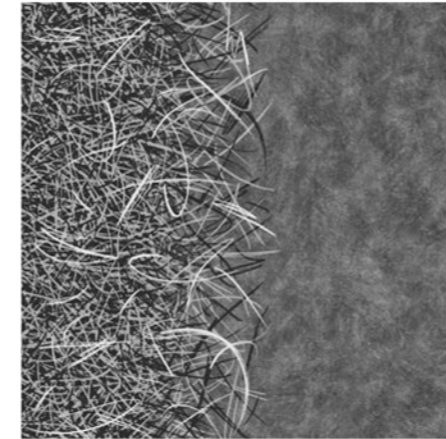
A B | vortex



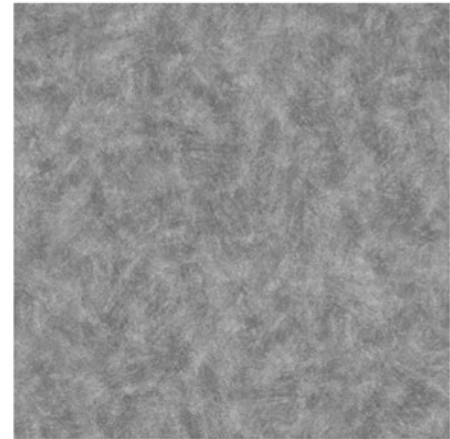
A2 | vortex



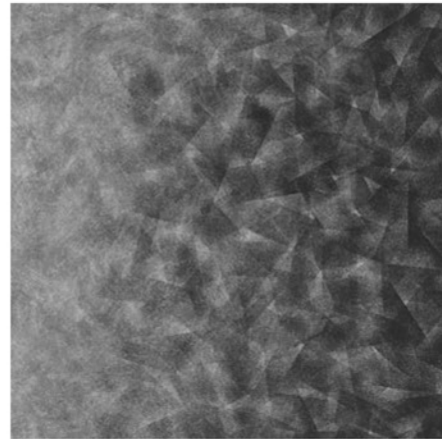
A3 | vortex



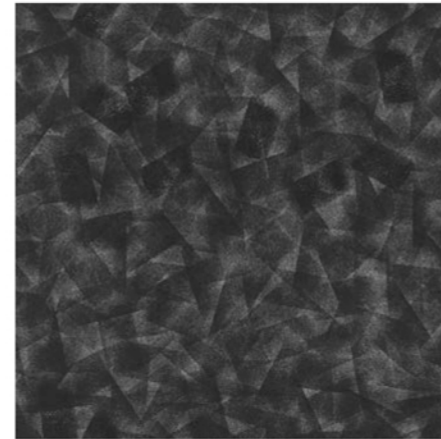
A4 | vortex



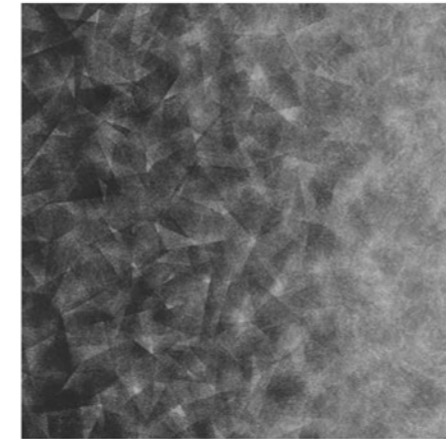
A B | artist



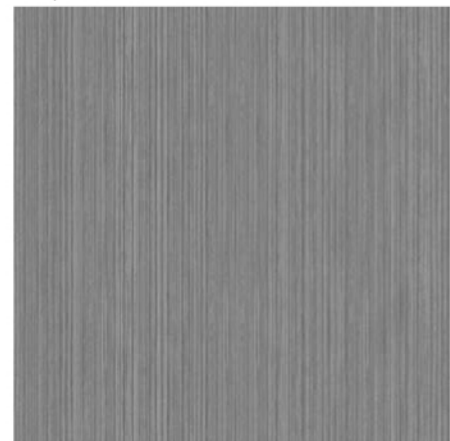
B2 | artist



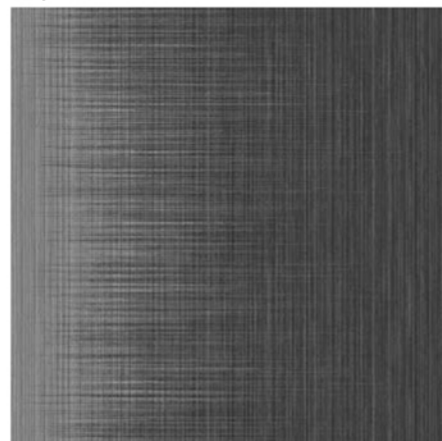
B3 | artist



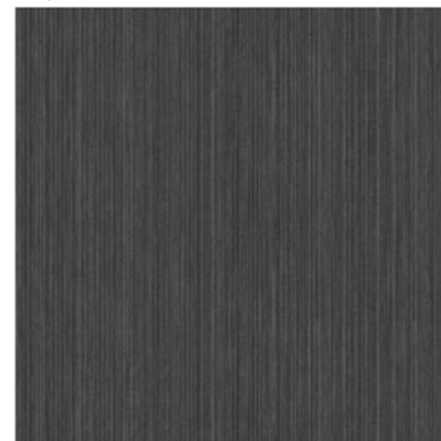
B4 | artist



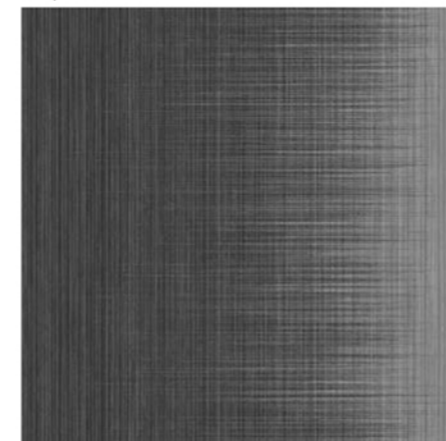
C1 | twilight



C2 | twilight



C3 | twilight



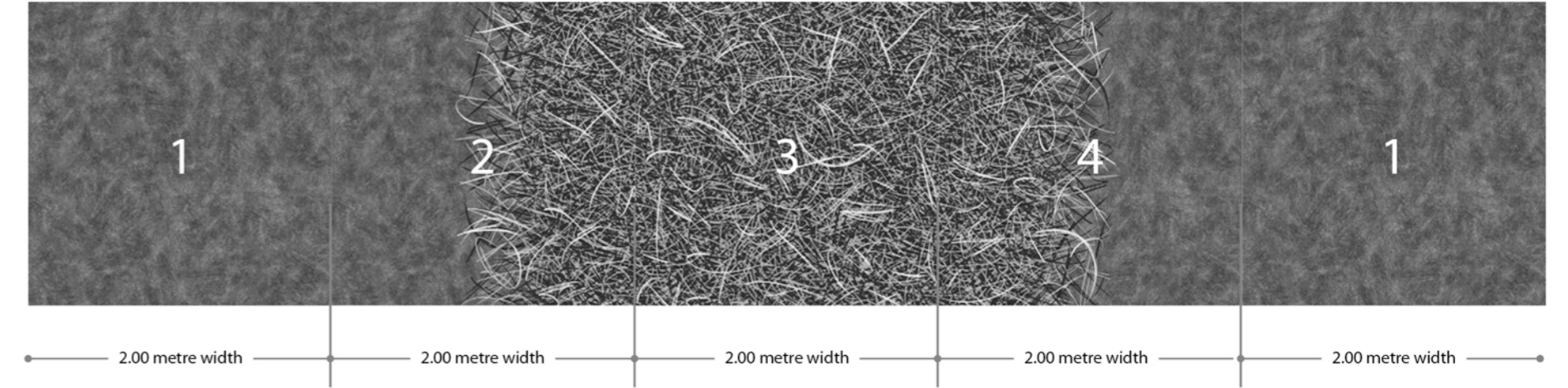
C4 | twilight

COMBINATION AND INSPIRATION

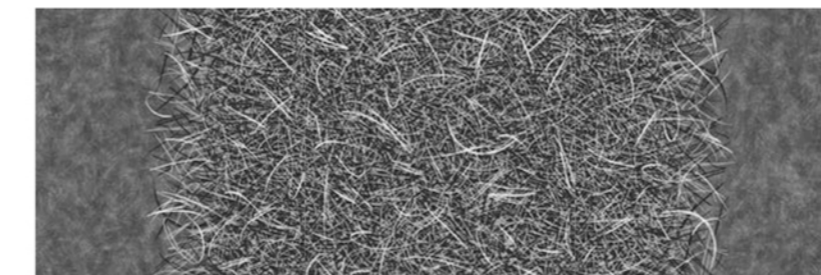
The flexibility of the systems makes combination possibilities almost endless. Some options are illustrated below.

Inspiration with 5 sheets (10 metres width):

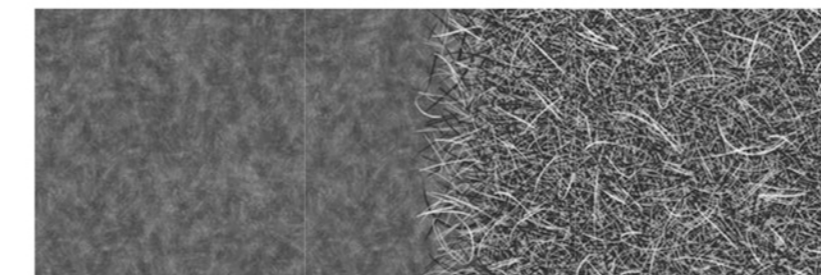
The full pattern of the design system stretches ten metres in width if you associate from left to right 5 sheets in the following order : starting with the uni design, followed by the left hand fading gradient design, the central design, then the right hand fading gradient design, and finishing by repeating the uni design.



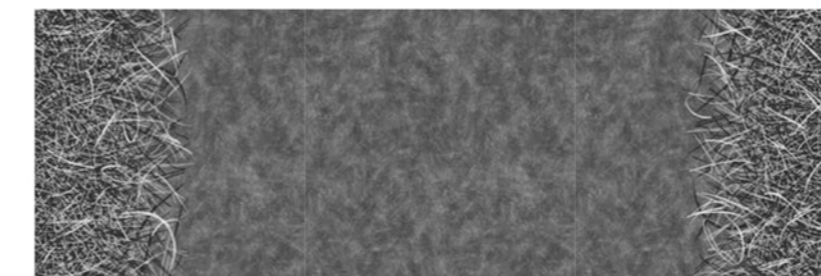
Inspiration with 3 sheets (6 metres width):



$$= 2 + 3 + 4$$

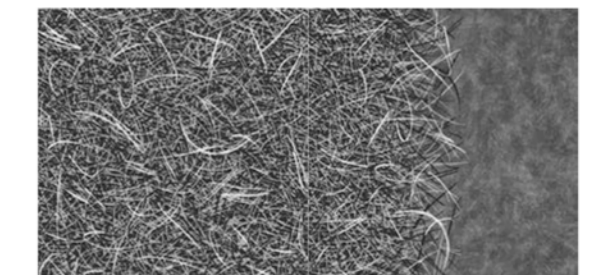


$$= 1 + 2 + 3$$

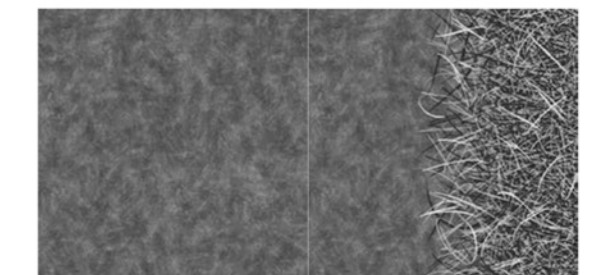


$$= 4 + 1 + 2$$

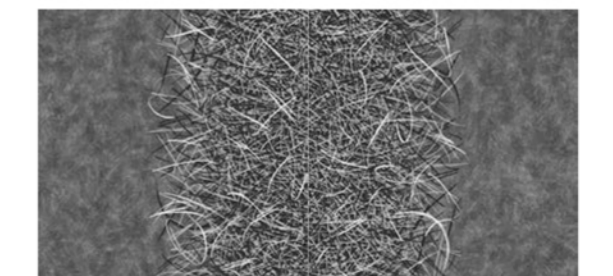
Inspiration with 2 sheets (4 metres width):



$$= 3 + 4$$



$$= 1 + 2$$



$$= 2 + 4$$