



9900-178

# WILTON METALLIC

Specification according to EN 1307

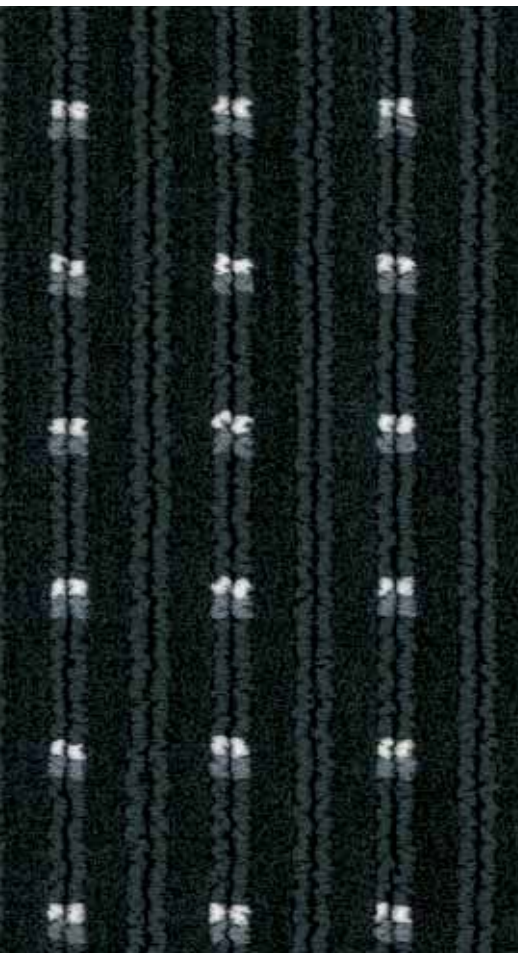
	172	171,175,176,178,173,174,177
Type of manufacture	Woven - Wilton Loop pile	Woven - Wilton Loop + cut pile
Pile Fibre	Solution dyed BCF Polyamide 6.6	Solution dyed BCF Polyamide 6.6
Width	400 cm / 13' 1.5"	400 cm / 13' 1.5"
Primary backing	Polypropylene / Polyester - viscose	Polypropylene / Polyester - viscose
Secondary backing	Finish	Finish
Total thickness	5.5 mm      0.22 inch	7.0 mm      0.28 inch
Effective pile thickness	3.6 mm      0.14 inch	4.3 mm      0.17 inch
Total mass	1500 g/m <sup>2</sup> 44.3 oz/yd <sup>2</sup>	1750 g/m <sup>2</sup> 51.7 oz/yd <sup>2</sup>
Total pile mass	760 g/m <sup>2</sup> 22.4 oz/yd <sup>2</sup>	1000 g/m <sup>2</sup> 29.5 oz/yd <sup>2</sup>
Effective pile mass	630 g/m <sup>2</sup> 18.6 oz/yd <sup>2</sup>	640 g/m <sup>2</sup> 18.9 oz/yd <sup>2</sup>
Pile density	0.175 g/cm <sup>3</sup> 0.0063 lb/in <sup>3</sup>	0.150 g/cm <sup>3</sup> 0.0054 lb/in <sup>3</sup>
Number of tufts	965 /dm <sup>2</sup> 80684 /yd <sup>2</sup>	965 /dm <sup>2</sup> 80684 /yd <sup>2</sup>
Stroll test	≤ 2.0 kV	≤ 2.0 kV
Vertical resistance	≤ 1x10 <sup>9</sup> Ohm	≤ 1x10 <sup>9</sup> Ohm
Classification for use	33 Commercial - heavy use	33 Commercial - heavy use
Flammability	C <sub>fl</sub> - s1	C <sub>fl</sub> - s1
Light Reflectance Value (LRV)	See right page per colour	See right page per colour
Colour depth (L)	See right page per colour	See right page per colour



Manufactured by:

Desso NV  
Robert Ramlotstraat 89  
B - 9200 Dendermonde





9900-175

Metallic is the look of the century. High-tech, sleek, professional and dynamic. Whether in cars, audio and video equipment, architecture or carpeting, metallic aesthetics are at the cutting edge of design. The Wilton Metallic collection reflects this stylish design trend.



Colours: 9900.171  
L 17,89  
LRV 2,49



Colours: 9900.172  
L 20,49  
LRV 3,11



Colours: 9900.173  
L 19,39  
LRV 2,84



Colours: 9900.174  
L 23,15  
LRV 3,84



Colours: 9900.175  
L 19,15  
LRV 2,78



Colours: 9900.176  
L 20,70  
LRV 3,17



Colours: 9900.177  
L 26,63  
LRV 4,96



Colours: 9900.178  
L 19,55  
LRV 2,88