

KENSINGTON

181



186



136



185



184



130



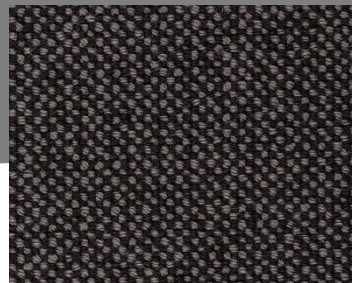
129



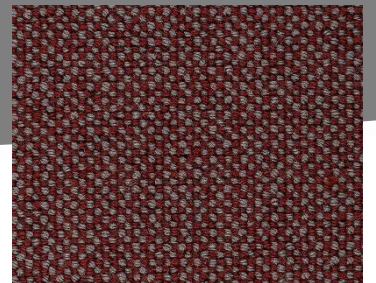
182



137



139



KENSINGTON



WIDTH 500
BREITE
LARGEUR

THERMAL CONDUCTIVITY $m^2 / K/W$ 0.14
WÄRMEDURCHLASSWIDERSTAND $m^2 / K/W$
RESISTANCE THERMIQUE $m^2 / K/W$

PILE FIBRE COMPOSITION 100% Pure New Zealand Wool
MATERIAL DER NUTZSCHICHT 100% reine Neuseeland Schurwolle
COMPOSITION DU VELOURS 100% Pure laine vierge de Nouvelle Zélande

LUXURY CLASS LC 3
LUXUSKLASSE
CLASSE DE LUX

YARN SPECIFICATION 3-ply yarn, hank dyed
GARNE-SPEZIFIKATION 3-fach Garn, stranggefärbt
SPÉCIFICATIONS DU FIL Fil 3 bouts, teint sur écheveaux

FLOORSYMBOLS
TEPPICHBODENSYMBOLLEN
SYMBOLES DE SOL

MASS OF PILE g/m^2 1.300
POLEINSATZGEWICHT g/m^2
MASSE TOTALE g/m^2



TOTAL MASS g/m^2 2.434
GESAMTGEWICHT g/m^2
MASSE TOTALE g/m^2



NUMBER OF TUFTS / m^2 65.535
NOPPENZAHL / m^2
NOMBRE DE TOUFFES / m^2

TOTAL THICKNESS in mm 9.1
GESAMTDICKE in mm
EPAISSEUR TOTALE in mm



JAMES
THE FINISHING TOUCH



BEBEST IN PURE WOOL SINCE 1982