



CHANGE AGENT

Compound Magic / Pure Alchemy

Milliken[™]

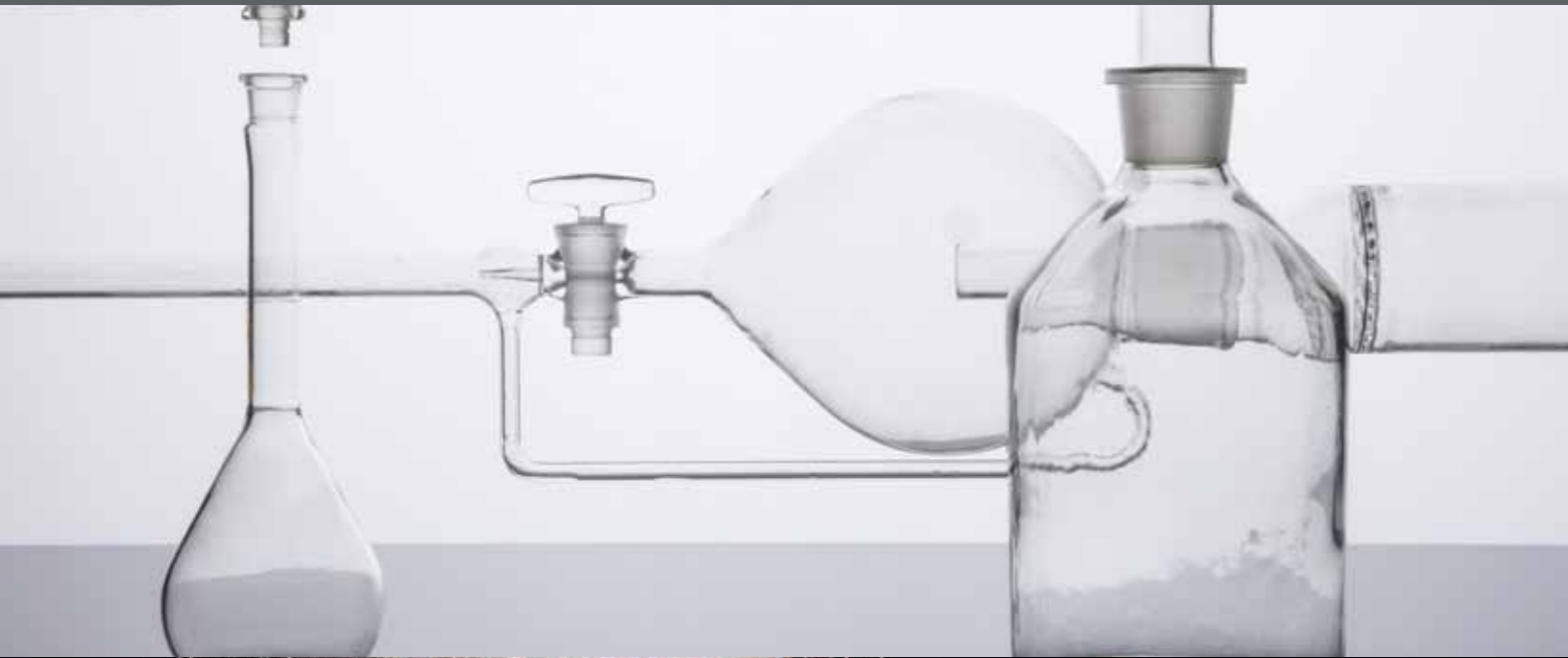


INSPIRED. INSPIRING.

A Catalyst of Transformation. It may seem the concepts of science and magic live on opposite ends of the spectrum. Science strives to understand and explain. Magic relies on the mystical possibilities of the unknown. The goal of each is similar, a desire to achieve complete transformation.

Change Agent is a carpet and LVT collection influenced by the transcendent act of bringing new purpose to natural materials. Compound Magic and Pure Alchemy are influenced by the process of metal encountering a catalyst and being driven to radically change. Whether it be science, magic, or a bit of both, Change Agent expresses the beauty found within perpetual transformation.

With complementing colours and plank sizes, two carpet designs, Compound Magic and Pure Alchemy seamlessly mix, match and pair with the Earth Science LVT design to create one beautifully continuous floor scape.

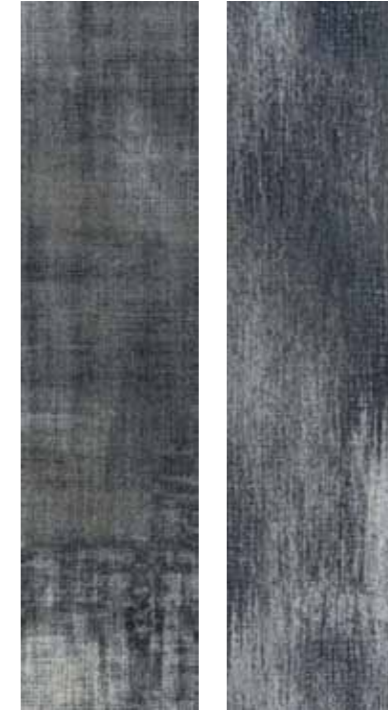


CHANGE AGENT / Compound Magic / Pure Alchemy



CHANGE AGENT / Compound Magic, COM180-73-154 Mercury Balance /
Pure Alchemy, PUA180-73-154 Mercury Balance

Compound
Magic



Pure
Alchemy





CHANGE AGENT / Compound Magic, COM261-217-174 Pipette Mix /
Pure Alchemy, PUA261-217-174 Pipette Mix



COM152-106-13
Ion Particle



PUA152-106-13
Ion Particle



COM218-145-48
Lab Climate



PUA218-145-48
Lab Climate



COM172-10-132
Blurring Pigments



PUA172-10-132
Blurring Pigments



COM261-217-174
Pipette Mix



PUA261-217-174
Pipette Mix



COM131-10-79
Quantum Sequence



PUA131-10-79
Quantum Sequence



COM144-138-120
Lead Diffusion



PUA144-138-120
Lead Diffusion

○ For service details see page 23
Pour connaître les détails du service, allez à la page 23
Unsere Service Information finden Sie auf Seite 23
Para detalles sobre nuestras opciones de servicio, vea la página 23



CHANGE AGENT / Pure Alchemy, PUA163-173-103 Secret Recipe / PUA242-13-250 Quartz Fusion
LVT | CHANGE AGENT / Earth Science, ESN78 Anodize



COM240-215-153
Petri Dish



PUA240-215-153
Petri Dish



COM171-152-13
Trailing Smoke



PUA171-152-13
Trailing Smoke



COM215-153-250
Tin Matter



PUA215-153-250
Tin Matter



COM53-62-103
Essential Neon



PUA53-62-103
Essential Neon



COM163-173-103
Secret Recipe



PUA163-173-103
Secret Recipe



COM21-124-145
Burnt Umber



PUA21-124-145
Burnt Umber

○ For service details see page 23
 Pour connaître les détails du service, allez à la page 23
 Unsere Service Information finden Sie auf Seite 23
 Para detalles sobre nuestras opciones de servicio, vea la página 23



CHANGE AGENT / Compound Magic, COM144-119-118 Carbon Scale /
Pure Alchemy, PUA144-119-118 Carbon Scale



COM83-75-71
Live Spell



PUA83-75-71
Live Spell



COM251-13-144
Test Tube



PUA251-13-144
Test Tube



COM180-153-174
Iron Core



PUA180-153-174
Iron Core



COM201-220-153
Twisted Alloy



PUA201-220-153
Twisted Alloy



COM48-145-143
Heated Graph



PUA48-145-143
Heated Graph



COM144-119-118
Carbon Scale



PUA144-119-118
Carbon Scale

○ For service details see page 23
 Pour connaître les détails du service, allez à la page 23
 Unsere Service Information finden Sie auf Seite 23
 Para detalles sobre nuestras opciones de servicio, vea la página 23



CHANGE AGENT / Compound Magic, COM242-13-250 Quartz Fusion



COM245-242-13
Liquid Principles



PUA245-242-13
Liquid Principles



COM143-245-174
Crystalline Rock



PUA143-245-174
Crystalline Rock



COM242-13-250
Quartz Fusion



PUA242-13-250
Quartz Fusion



COM68-44-145
Bunsen Burner



PUA68-44-145
Bunsen Burner



COM180-73-154
Mercury Balance



PUA180-73-154
Mercury Balance



COM67-86-87
Evaporation Mass

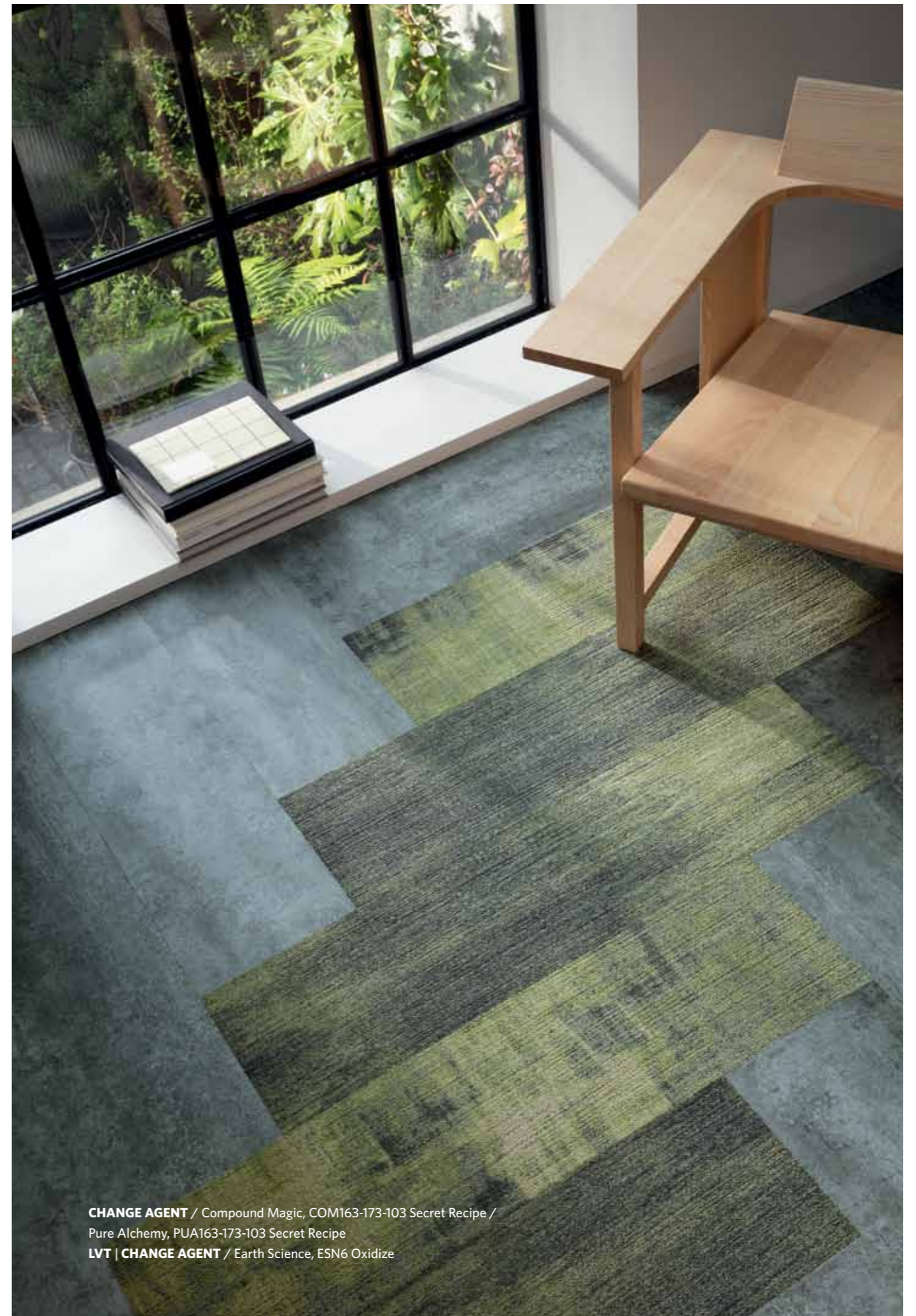


PUA67-86-87
Evaporation Mass

○ For service details see page 23
Pour connaître les détails du service, allez à la page 23
Unsere Service Information finden Sie auf Seite 23
Para detalles sobre nuestras opciones de servicio, vea la página 23



CHANGE AGENT / Compound Magic, COM242-13-250 Quartz Fusion /
Pure Alchemy, PUA242-13-250 Quartz Fusion
LVT | CHANGE AGENT / Earth Science, ESN6 Oxidize



CHANGE AGENT / Compound Magic, COM163-173-103 Secret Recipe /
Pure Alchemy, PUA163-173-103 Secret Recipe
LVT | CHANGE AGENT / Earth Science, ESN6 Oxidize



ESN44 Affinity



ESN174 Mineral



ESN98 Composition



ESN6 Oxidize



ESN152 Precious



ESN220 Crystalize



ESN108 Process



ESN81 Earthed



ESN260 Mystery



ESN78 Anodize

Change Agent is a coordinated carpet / LVT collection.

The two carpet designs, Compound Magic and Pure Alchemy are complemented by Earth Science, an authentic stone LVT design offered in 10 beautiful colours.

Both the carpet and LVT are supplied as 25x100cm planks.

Change Agent est une collection coordonnée de moquettes / dalles LVT.

Les deux designs de moquette Compound Magic et Pure Alchemy sont complétés par Earth Science, une dalle LVT au design de pierre authentique proposée dans 10 magnifiques coloris.

Dalle LVT et moquette sont toutes deux proposées en lames de 25 x 100 cm.

Change Agent ist eine fein abgestimmte Teppich-/LVT-Kollektion.

Ihre zwei Teppichdesigns, Compound Magic und Pure Alchemy, werden ergänzt durch Earth Science, eine Design-LVT mit absolut authentisch wirkenden Steineffekten, die in 10 spektakulären Farbtönen verfügbar ist.

Sowohl die Teppich- als auch die LVT-Planken sind im 25x100cm Plankenformat erhältlich.

Change Agent es una colección coordinada de moqueta y LVT.

Los dos diseños de moqueta, Compound Magic y Pure Alchemy, se complementan con Earth Science, un diseño de LVT de piedra auténtica que se ofrece en 10 maravillosos colores.

Tanto las lamas de moqueta como las de LVT se ofrecen en un tamaño de 25x100cm.



LIGHT REFLECTANCE

LA RÉFLEXION LUMINEUSE LICHTREFLEXIONSWERTE REFLEXIÓN DE LA LUZ

Carpet | CHANGE AGENT / Compound Magic

Reference	LRV (Y) Value
COM172-10-132 Blurring Pigments	7.3
COM68-44-145 Bunsen Burner	14.6
COM21-124-145 Burnt Umber	13.2
COM144-119-118 Carbon Scale	16.5
COM143-245-174 Crystalline Rock	13.6
COM53-62-103 Essential Neon	16.4
COM67-86-87 Evaporation Mass	11.2
COM48-145-143 Heated Graph	18.7
COM152-106-13 Ion Particle	11.5
COM180-153-174 Iron Core	7.2
COM218-145-48 Lab Climate	17.3
COM144-138-120 Lead Diffusion	21.8
COM245-242-13 Liquid Principles	21.5
COM83-75-71 Live Spell	13.1
COM180-73-154 Mercury Balance	17.4
COM240-215-153 Petri Dish	21.4
COM261-217-174 Pipette Mix	17.1
COM131-10-79 Quantum Sequence	9.0
COM242-13-250 Quartz Fusion	16.1
COM163-173-103 Secret Recipe	18.8
COM251-13-144 Test Tube	17.2
COM215-153-250 Tin Matter	31.1
COM171-152-13 Trailing Smoke	16.7
COM201-220-153 Twisted Alloy	30.4

LVT | CHANGE AGENT / Earth Science

Reference	LRV (Y) Value
ESN44 Affinity	18.7
ESN78 Anodize	11.7
ESN98 Composition	10.0
ESN220 Crystalize	34.7
ESN81 Earthed	12.3
ESN174 Mineral	10.1
ESN260 Mystery	9.8
ESN6 Oxidize	23.1
ESN152 Precious	23.1
ESN108 Process	13.8

Carpet | CHANGE AGENT / Pure Alchemy

Reference	LRV (Y) Value
PUA172-10-132 Blurring Pigments	7.5
PUA68-44-145 Bunsen Burner	10.7
PUA21-124-145 Burnt Umber	8.1
PUA144-119-118 Carbon Scale	11.8
PUA143-245-174 Crystalline Rock	12.4
PUA53-62-103 Essential Neon	13.0
PUA67-86-87 Evaporation Mass	7.3
PUA48-145-143 Heated Graph	10.8
PAU152-106-13 Ion Particle	14.7
PUA180-153-174 Iron Core	13.8
PUA218-145-48 Lab Climate	17.7
PUA144-138-120 Lead Diffusion	11.3
PUA245-242-13 Liquid Principles	15.0
PUA83-75-71 Live Spell	17.2
PUA180-73-154 Mercury Balance	10.8
PUA240-215-153 Petri Dish	25.4
PUA261-217-174 Pipette Mix	16.1
PUA131-10-79 Quantum Sequence	5.1
PUA242-13-250 Quartz Fusion	19.0
PUA163-173-103 Secret Recipe	18.6
PUA251-13-144 Test Tube	15.2
PUA215-153-250 Tin Matter	26.9
PUA171-152-13 Trailing Smoke	12.0
PUA201-220-153 Twisted Alloy	22.9

SERVICE



Basic Service

Colours indicated with this symbol will have varying lead times. They are not included in the Quick Ship programme. Contact Customer Service with design, colour and quantity requirements for a lead time quotation.

Service de base

Les coloris indiqués par ce symbole comportent des délais de livraison variables. Ils ne sont pas inclus dans le service d'envoi rapide. Contactez le service clients en indiquant le design, le coloris et la quantité désirés pour connaître le délai de livraison.

Standard - Service

Die mit diesem Symbol markierten Farben haben unterschiedliche Lieferzeiten. Sie sind nicht im Schnellversand-Programm verfügbar. Teilen Sie unserem Kundenservice Ihre Wünsche hinsichtlich Design, Farbe und Menge mit, damit wir Ihnen einen Liefertermin anbieten können.

Servicio básico

Los colores indicados con este símbolo tienen diferentes plazos de envío, pues no están incluidos en el programa Quick Ship de Envío Rápido. Por favor, póngase en contacto con nuestro departamento de Atención al Cliente indicando el diseño, color y cantidad requeridos y ellos le darán un presupuesto y una estimación del plazo.

Milliken LVT products are held in stock in our UK warehouse. Contact Customer Service for availability.

Nos lignes LVT sont produites en quantite pour stockage sur site Milliken. Merci de contacter notre service clientele pour valider la disponibilite de votre besoin projet.

Unsere LVT Produkte sind in unserem Warendepot in Großbritannien eingelagert. Kontaktieren Sie unseren Kundenservice für weitere Informationen zur Verfügbarkeit.

Nuestros productos de LVT están normalmente en stock en nuestro almacén de Reino Unido. Si quiere información sobre la disponibilidad de alguno de nuestros productos, póngase en contacto con nuestro departamento de atención al cliente.

CUSTOMER SERVICE

SERVICE CLIENT / KUNDENSERVICE-
CENTER / SERVICIO AL CLIENTE

UK

T. +44 (0)1942 612 777
E. carpetenquiries@milliken.com

FRANCE

T. 08 05 54 27 77
E. demandesmoquettes@milliken.com

DEUTSCHLAND

T. 0800 7243794
E. verkauf@milliken.com

ESPAÑA

T. +44 (0)1942 612 777
E. informaciondemoqueta@milliken.com

SHOWROOMS**LONDON**

T. +44 (0)20 7336 7290

5 Berry Street,
Clerkenwell,
London EC1V 0AA

PARIS

T. +33 (0)1 40 98 06 99

40 Rue Des Mathurins,
75008 Paris

EUROPEAN HEAD OFFICE

SIÈGE EUROPÉEN / EUROPAZENTRALE /
SEDE CORPORATIVA EUROPA

T. +44 (0)1942 826 073

Beech Hill Plant,
Gidlow Lane,
Wigan WN6 8RN

www.millikenfloors.com

Cover Image

Onyx texture surface background:
Alexander Cher / iStock

Version 1

Issued January 2020
Publiée Janvier 2020
Ausgabe Januar 2020
Expedida Enero 2020

The Milliken logo is written in a white, elegant, cursive script font against the dark grey background.